



THE BEANPOT

Newsletter of the American Society of Safety Engineers
Greater Boston Chapter



February 2010

INSIDE THIS ISSUE

<i>Upcoming Meeting</i>	1
<i>ASP/CSP Prep Workshop</i>	1
<i>GBC Announces the Safety Professional of the Year</i>	2
<i>Welcome New Members</i>	2
<i>GBC Online Networking</i>	2
<i>National Wear Red Day</i>	3
<i>Texting Warnings</i>	3
<i>Gov't Affairs News/Updates</i>	4
<i>Safety 2010 - PDC</i>	5
<i>NAOSH Week 2010</i>	5
<i>Chapter Officers/Contacts</i>	5



The Beanpot is published periodically to members of the ASSE Greater Boston Chapter. This newsletter is compiled by the Newsletter Editor and the VP Communications based upon contributions of members. Archived issues can be viewed at the chapter's website, www.asseboston.com. For additional information, contact Bryan Murray.

UPCOMING TECHNICAL MEETING



FEBRUARY

Topic: OSHA's Agenda & Focus for 2010 & Beyond

Speaker: Tim Irving, OSHA

Date & Time: February 25, 2010, 5:30 – 8:00 PM

Location: Best Western, Waltham, MA

Registration contact: mbrown@nerconstruction.com

Go to <http://www.asseboston.com/events.htm> for more info



GREATER BOSTON CHAPTER HOSTS ASP/CSP PREP WORKSHOP April 7-9, 2010 – Hopkinton, MA

Are you planning to obtain your ASP/CSP designation in the near future? ASSE's Greater Boston Chapter is again coordinating a workshop to help you prepare for the ASP/CSP exam. A Safety Fundamentals Exam Preparation Workshop will be held at EMC Corporation in Hopkinton, Massachusetts, from April 7-9. The workshop has been a huge success in our Chapter for many years. In fact, many of those who have successfully completed the class achieved their professional designation thereafter.

This year's course will again be instructed by the nationally-recognized firm of Langlois, Weigand & Associates. ASSE members can attend for \$550, while non-members can attend for \$595. Pre-registration and payment is required by 02/28/2010. Each student will be provided a fact-filled study guide and a scientific calculator. We anticipate the class will fill quickly, so be sure to register today! To register, contact: Dave Thompson, CSP, Pfizer, 1 Burtt Road, G-1200, Andover, MA, 01810, thompsd9@wyeth.com, 978/247-3503.



Pictured above (L to R): Roger Foster, TomRich

ROGER FOSTER NAMED GBC SAFETY PROFESSIONAL OF THE YEAR

By Kathy Wunschel, VP Chapter Development

Roger W. Foster, CSP, Group Safety Director for Worldcolor, was recently awarded Safety Professional of the Year (SPY) by the Greater Boston Chapter of ASSE. This award acknowledges Roger's exemplary work for Worldcolor, the GBC, and his continued commitment to the field of occupational safety. As the winner of the GBC SPY, Roger's nomination petition will also now be considered - along with other Safety professionals from other Chapters throughout the region - for the 2010 ASSE Region VIII SPY Award. Congratulations, Roger!

WELCOME NEW MEMBERS!

By Steve Hart, Membership Chair

One of the most exciting things that can happen within our Chapter is growth! A list of new members who have joined since September 30, 2009 is included below. Please join me in extending a warm welcome to:

Joel Albertine	Brian Stymest
Tracy Dechaine	Daren Canfield
Michael Ferry	Robert O'Neil
Melissa Kociuba	Shawn Rice
Kim Willingham	Mary Strzempko
Frank Brown	David Tibbetts
Michael Ferry	Michael Baut
Brendan McDuffee	Brian Days
Tony Williams	James Farrell
Wayne Zarycki	K Denise Guillette
Josh Commass	Arthur Mabbett
Donald Delikat	Matthew Norton
Maurice Devine	Joseph Varnie
Amy Kampersol	Sarah Wilson
Daniel McDavitt	



RECOGNIZE GBC MEMBERS MOQ Nominations Due

GBC members who have made notable contributions to the chapter may be recognized through our "Member of the Quarter" program. MOQs are GBC members in good standing who have taken initiative to improve the chapter or demonstrated consistently superior performance in service to our chapter. To nominate a deserving individual, simply send the member's name and a brief description about the reason for the nomination via email to kwunschel@metlife.com and ekennedy@exponent.com. The Awards & Honors Committee will evaluate all MOQ nominations and select award recipients. MOQs will be recognized at the annual social.



ENHANCE YOUR PROFESSIONAL NETWORK THROUGH ASSE GBC Get Connected!

ASSE's Greater Boston Chapter now has its own LinkedIn group and Facebook fan page! We've created online networking opportunities to provide you the opportunity to leverage the talented professionals in our Society and Chapter. We believe that the value of a strong network of professional contacts can make a difference in your success as a safety professional and can add value to your organization. Through your contributions to these online groups, GBC hopes to be able to utilize these platforms to take our communication and engagement to a different level. You are invited to join us in this new endeavor!

On LinkedIn, search for us by our group name - "American Society of Safety Engineers, Greater Boston Chapter". On Facebook, you can find us at "ASSE Greater Boston Chapter".



NATIONAL WEAR RED DAY Friday, February 5, 2010

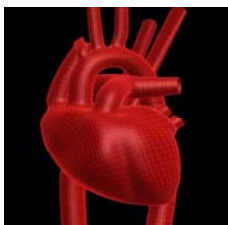
Friday, February 5, 2010, is National Wear Red Day® - a day when Americans nationwide will take women's health to heart by wearing red to show their support for women's heart disease awareness. The Red Dress®, the national symbol for women and heart disease awareness, was created by *The Heart Truth*® in 2002 to deliver an urgent wakeup call to American women.

Join *The Heart Truth* on National Wear Red Day to help spread the critical message that "Heart Disease Doesn't Care What You Wear—It's the #1 Killer of Women" in America! Everyone can participate in the national movement by wearing their favorite red dress, shirt, tie, or [Red Dress Pin](#) on Friday, February 5, 2010. For more information on how to get involved, visit the [National Wear Red Day toolkit](#) which provides useful information and resources that you can use to help celebrate National Wear Red Day with your family, workplace, and community.

HEALTHY HEART MATERIALS

"One in 4 women in the United States dies of heart disease, while 1 in 30 dies of breast cancer" stated the National Heart, Lung, and Blood Institute (NHLBI), an organization within the National Institutes of Health (and part of the U.S. Dept of Health and Human Services). Research on women's heart health is skyrocketing. Media reports about new ways to prevent and treat heart disease in women is released nearly every week.

To help provide relevant and timely information to women about how to reduce personal risk of heart-related problems, the NHLBI has made available the 20th anniversary edition of ["The Healthy Heart Handbook for Women"](#), along with other a variety of

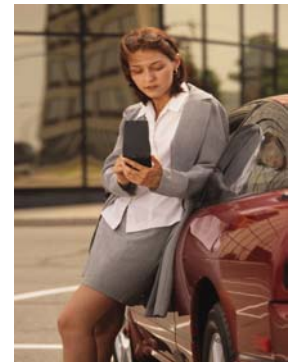


wonderful promotional and educational materials. Visit the [Heart Truth online toolkit](#) for brochures, pamphlets, educational videos, videos, personal pledge cards, proclamations, and other great materials.

US TEEN DRIVERS IGNORE WARNINGS ABOUT TEXTING

Texting doesn't seem to be a fad. Cell phones with 1-2-3 type keypads seem to be nearly impossible to find - no matter which wireless carrier you use. From kids to grandparents, people of all ages are now texting as an important means of communication. Many businesses have begun to harness the power of texting, too. For example, scheduling and conveying important meeting information, delivery confirmation, advertising of new products and services, and quick client contacts are now communicated via text. We need not look far to see examples of the success of the texting revolution. In fact, an organized "Texting for Haiti" effort recently allowed cell phone users to donate millions to earthquake relief through the use of texting. Amazing! It seems unlikely that texting will stop any time soon. On the other hand, texting while performing work activities – particularly operating a vehicle - should be on the radar screen as a contemporary subject of discussion within our SH&E departments.

Texting while behind the wheel remains a significant concern on the roadways across the United States. To that end, ASSE recently revised its position statement on distracted driving, which addresses texting among the variety of distractions that can cause dangerous driving and encouraged its members to become involved in state efforts to limit distracted driving from their leadership positions as SH&E professionals concerned that the leading cause of workplace fatalities are roadway incidents. ASSE's position statement can be found [on ASSE's website](#). The full article below can be found at <http://www.reuters.com/article>.



Texting seems to only continue gaining momentum across the United States. You can make a difference in your company by working with others to develop sound business policies regarding use of cell phones and texting. To keep employees focused on "life critical tasks" – like driving, operating machinery and equipment, attending confined space entries, and many other activities – it is prudent to outline when texting is or is not permissible in your workplace.

OSHA VIDEO: RESPIRATOR FIT & USE GUIDANCE



OSHA has produced two new videos that feature guidance on respirator safety. The "**Respirator Safety**" video shows healthcare workers how to correctly put on and take off respirators, such as N95s. The "**Difference Between Respirators and Surgical Masks**" video explains the particular uses for each one and how they prevent worker exposure to infectious diseases. Visit the Department of Labor's [YouTube](#) site to see the latest videos.

OSHA OFFERS BOOKLET ON Cr(VI) EXPOSURE

Hexavalent chromium (Cr(VI)) is a toxic form of the element chromium. Cr(VI) may be used in pigments, metal plating, wood preservatives, fungicides, and in chemical synthesis as an ingredient and a catalyst. Cr(VI) may be present in fumes generated during the production or welding of chrome alloys, and is often used in stainless steel. Cr(VI) can cause cancer and damage to the nose, throat and lungs of exposed workers. OSHA has recently announced a new [Hexavalent Chromium](#) booklet that explains OSHA's hexavalent chromium standards and helps employers and employees know the best ways to prevent illness and death caused by exposure in the workplace. Visit [OSHA's publications Web page](#) for more resources on hexavalent chromium and other information on staying safe and healthy on the job.

TIME TO POST THE OSHA ANNUAL SUMMARY



It's that time again! Beginning Feb. 1, employers must post a summary of the total number of job-related injuries and illnesses that occurred last year.

As a reminder, employers are only required to post the Summary (OSHA Form 300A) - not the OSHA 300 Log. The posting must be available from Feb. 1 to Apr. 30, and is to be displayed in a common area where notices to employees are usually posted.

NEW NIOSH PUBLICATION THE COST OF FATAL INJURIES

NIOSH recently announced the publication of "The Cost of Fatal Injuries to Civilian Workers in the United States, 1992-2001." The document includes measurements of the economic loss to society from the premature deaths of workers. <http://www.cdc.gov/niosh/docs/2009-154/>

NEW NIOSH OFFICE OF CONSTRUCTION S&H

NIOSH announced its new Office of Construction Safety and Health in December. NIOSH intends to "ensure rigorous coordination of construction safety and health research" to help address the special problems in the industry. For more on current NIOSH construction research, visit <http://www.cdc.gov/niosh/topics/construction/>.



CPSC APPROVES FINAL RULE MANDATORY RECALL NOTICES

The U.S. Consumer Product Safety Commission (CPSC) announced on Jan. 11, 2010, that it unanimously approved a new rule setting guidelines and requirements for information in mandatory recall notices. A mandatory recall can be ordered by the Commission or a U.S. District Court.

Each section of the rule is either required by Section 214 of the Consumer Product Safety Improvement Act (CPSIA), or CPSC has determined it will likely increase recall effectiveness by helping consumers:

- (a) Identify the product subject to a recall
- (b) Understand the hazard identified with the product
- (c) Understand what remedy is offered regarding the product.

The final rule goes into effect 30 days after publication in the Federal Register.

The CPSC noted that in 2009, 100 % of the recalls announced to consumers were done voluntarily and cooperatively with impacted firms. As more products get recalled each year, the high rate of cooperative recall announcements negotiated by CPSC staff is a benefit to the safety of consumers.

SAFETY 2010 ASSE'S ANNUAL PDC



Each year, ASSE conducts an annual Professional Development Conference (PDC) that is “the” event for members to attend. Offering excellent opportunities for education and networking, the PDC is often well-

attended by members of the Greater Boston Chapter. This year, the conference will be held on the east coast, providing a nearby and perhaps more affordable opportunity for members to attend. Registration is now open for the PDC, June 13-16, in Baltimore, Maryland. Visit www.safety2010.org for more information.

NAOSH WEEK 2010



Aimed at enhancing awareness of occupational safety and health and the prevention of injuries and illnesses, “NAOSH Week” occurs each year during the first week of

May. NAOSH partners (including ASSE, the Canadian Society of Safety Engineering and OSHA) ask you to consider getting involved and promoting NAOSH Week in your workplace and community. For ideas and additional information, visit ASSE’s NAOSH ’10 home page at: <http://www.asse.org/newsroom/naosh10/whatisnaosh.php>

HOW TO UPDATE YOUR ASSE AND GBC CONTACT INFO

GBC sends almost all of our communication electronically. Our roster – the basis for our electronic mailings – is maintained by ASSE headquarters. We do not share or sell your email address. To update your contact information, please visit www.asse.org or contact the ASSE Customer Service department at 847.699.2929. If you have questions or specific feedback regarding the Boston Chapter, please contact any of our [Committee](#) members.



JOB SEARCH ASSISTANCE

By Steve Maffetone, Placement Chair

The GBC posts positions of interest to members on our Chapter’s website. We also accept position listings from companies. To see the current listing of positions, visit [ASSE Boston Job Postings](#). To place a posting, contact [Steve Maffetone](#), GBC Placement Chair.



ASSE GBC EXECUTIVE BOARD 2009-2010

President

Tom Rich, trich@walshbrothers.com

President-Elect

Kristin Hoffman, Hoffmak4@wyeth.com

VP Bylaws & Planning

Roger Foster, roger.foster@worldcolor.com

VP Chapter Development

Kathleen Wunschel, kwunschel@metlife.com

VP Communications

Bryan Murray, Bryan_murray@emc.com

VP Finance

Donald Royer, Don.royer@oldcastleprecast.com

VP Government Affairs

Adam Sotirakopoulos,
Adam.sotirakopoulos@enel.com

VP Member Services

Mark Brown, mbrown@nerconstruction.com

Secretary

Richard DiBona, richdibona@members.asse.org

Past President

Remi Fleurette, rfleurette@pjkeating.com

House of Delegates

Tom Rich and Remi Fleurette